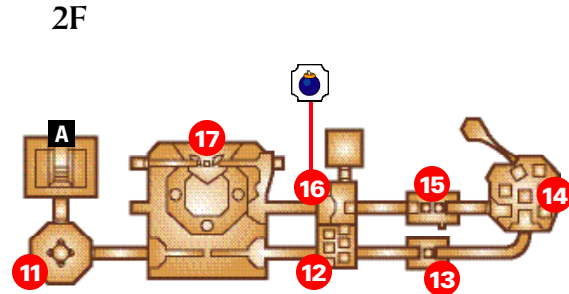
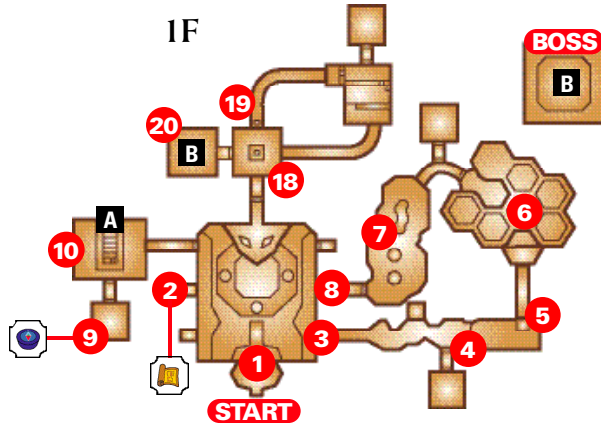




Dodongo's Cavern Map



Map Key 1 Strategy Callout A Floor Connection Map Compass Bomb Bag

1 BLOW OPEN THE ENTRANCE

Pick one of the Bomb Flowers on either side of the doorway and throw it at the stone wall blow open the entrance to Dodongo's Cavern.



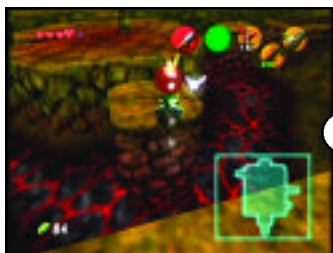
2 FIND A MAP

After going to your left around the lava pool you'll see a ladder. Climb the ladder and pick a Bomb Flower. L-Target the Beamos and throw the lit Bomb at it to destroy it. Place another Bomb near the stone wall to blow it open. Inside you'll find a large treasure chest that holds the Map to Dodongo's Cavern.



3 BLOW OPEN ANOTHER DOOR

Pick a Bomb Flower and cross over the rising platform to the center, Bomb the Beamos and continue to the other side. Pick another Bomb from a Bomb Flower and destroy the last Beamos. Pick one more Bomb Flower to destroy the wall at Callout 3 and continue through the door.



4 BABY DODONGOS

As you head down the hall, a couple of Baby Dodongos will surface from the ground. Swipe them with your sword and then stand back to avoid their explosions. For the second round, lead them over to the stone wall with a crack. One you've defeated them they will bow open the door revealing a secret room.



5 UNLOCK THE DOOR

To keep the door unlocked, move an Armos onto the switch on the floor to keep the switch in the down position.



6 DEFEAT THE LIZALFOS

When you enter the room, the door behind you will lock. To continue on, you'll need to defeat both Lizalfos to unlock the next door. Wait for one to approach, stun it with Deku Nuts, then swipe it with your Kokiri Sword. Remember to block with your Deku Shield if it attacks. Repeat until they are both defeated.



7 DODONGO NUISANCE

There are Three Dodongos in this room who will make it more difficult to light the three torches in the room. To defeat them, pick the Bomb Flowers and throw the Bombs at their tails. Time your throws so the radius of the explosion hits their tails, but watch out for their fiery breath when you're in front of them. When you get a chance, light a Deku Stick at the torch, then light the three torches to unlock the door.



8 THE SWITCH REVEALS MORE

In the hallway you'll see a switch on the ground that will unlock a door across the way in the main room. Jump over the rising platforms to the other side of the room and enter the unlocked door.



9 GET THE COMPASS

Destroy the stone wall with a Bomb from the Bomb Flower nearby. Inside you'll see three Armos guarding a large treasure chest. The Armos in front will come to life and attack you. Watch out once you've hit it with a Bomb, because it will try to attack you before it blows up. Retrieve the Compass from the large treasure chest.



10 CREATE A STAIRCASE

Return to the room with the Bomb Flowers lining the stone wall. Place a Bomb in between the two rows of Bomb Flowers to start a chain reaction, detonating all of the Bomb Flowers. This will create a staircase. Climb up and enter the door at the top of the room.



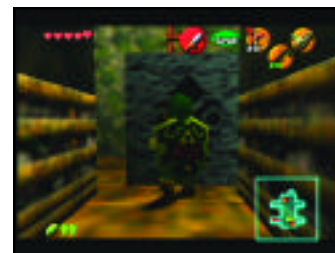
11 MOVE THE STATUE

You'll see a pillar surrounded by Armos. Find the one that is blocking the ladder and move it so you can climb up. Be careful not to get too close to the other Armos, or they will awaken and attack. Once you've climbed up, step onto the switch to open the locked door. Go through the door and run across the broken bridge.



12 SLIDING SPIKES

You will have to be very careful in this room. Climb down the ladder and quickly move to your right. Large spikes slide along some of the paths, so you have to time your steps to get through. At the other end of the room you'll see a gray block under a ladder. Pull the stone so you can climb the ladder and reach a Bomb Flower. Throw a Bomb at the stone wall above the ladder to open it, then continue on.



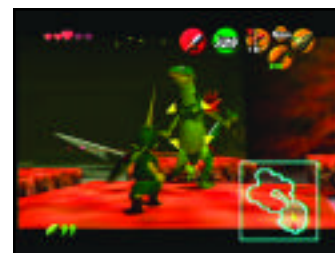
13 SLING AN EYE

Use your Fairy Slingshot to shoot the Eye Switch above. This will extinguish the wall of flames on the platform so you can get across.



14 MORE LIZALFOS

The next room has two more Lizalfos you'll have to defeat to open the door. Use the same strategy as before. Collect some Hearts if you need health, then enter the next room.



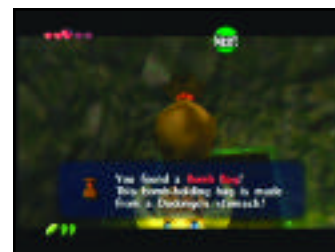
15 SLING TWO EYES

There are two walls of flames on the platforms in this room. To extinguish the first fire, use your Fairy Slingshot to shoot the Eye Switch above the door. Cross over to the first platform, then turn to your left and shoot the second Eye Switch to put out the second fire.



16 BOMB BAG

You will return to the room where you had to dodge the spikes, but you will be at a higher level. Follow path over bridge and look to your right. You'll find a large treasure chest with the Bomb Bag. This bag is made from Dodongo's stomach and will hold 20 Bombs. Now you don't have to pick Bomb Flowers anymore.



17 DODONGO'S EYES

When you enter the main room, step on the switch to make one of the moving platforms rise to the upper part of the room. Ride the platform up, then cross the bridge over the statue. Stop at both holes in the bridge to drop a Bomb into one of the eyes of the statue. When both eyes are red the mouth will open, revealing a door. Drop down and enter the mouth.



19 PUSH THE BLOCK

At the end of the path you will see a block. Push it off the ledge onto the floor of the room. You will then need to pull it away from the wall, then push it into the hole in the ground. This will unlock a door.



18 THROUGH THE MOUTH

Once inside the room you'll see a hole in the ground that you'll need to cover to enter the Boss area. Enter the passage to the right. It will lead to a room with a maze where you'll have to climb onto boxes and over walls to reach the other end.



20 A BLAST TO THE BOSS

In this room you'll see a dark patch on the ground. Place a Bomb on it to blow a hole in the floor, revealing the entrance to the Boss.



BOSS KING DODONGO

Keep a safe distance and wait for King Dodongo to open its mouth. Throw a Bomb inside its mouth and wait for it to explode. It will be temporarily stunned, allowing you to strike its head with your sword. Get a good hit in, then move close to the lava pool to avoid getting hit when it starts rolling. Repeat this process until King Dodongo is defeated.



BROUGHT TO YOU BY:



FOR SUBSCRIPTION INFORMATION, VISIT:
http://www.nintendo.com/news/news_power_promo.jsp