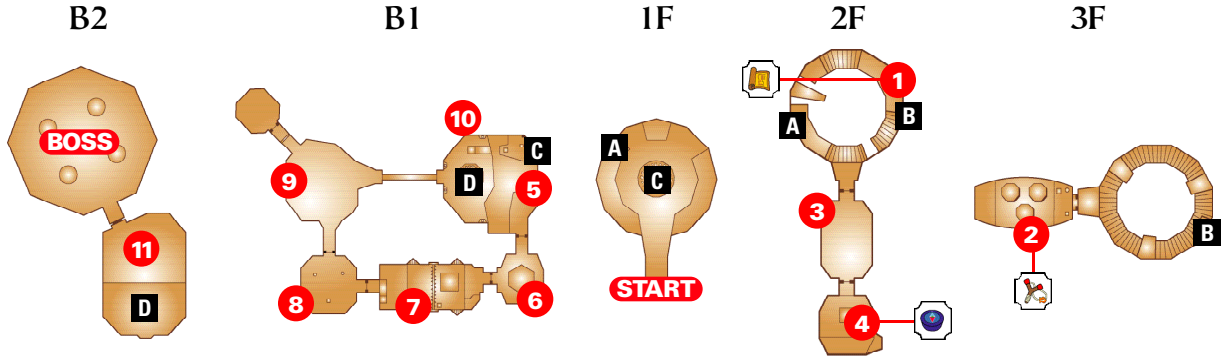




**Deku Tree Map**



**Map Key** 1 Strategy Callout A Floor Connection Map Compass Slingshot

**1 THE GREAT DEKU TREE**

The cursed seeds of the Deku Tree have grown into Deku Babus. Cut them down to collect Deku Sticks. You will need them to help you get through the Deku Tree. Your main goal is to find the Spiritual Stone of the Forest. You will also find a new weapon, the Fairy Slingshot. Climb the ladder to your left to reach the 2nd Floor.



**2 DEFEAT THE BABY GOHMAS**

Follow the ledge until you see a large treasure chest. Eliminate the Baby Gohma Egg with a jump attack from a distance. You'll destroy the egg before it hatches. If you get too close to the egg it will hatch. A jump attack will also defeat the Baby Gohma with one strike. Near the treasure chest, watch out for a Baby Ghoma Egg that falls from above. Baby Gohma Eggs will attach to any surface, so watch for their shadows. Inside the large treasure chest is the Map to the Deku Tree.



**3 BURN YOUR WAY TO THE DOOR**

Climb the vines on the wall next to the large treasure chest to reach the 3rd Floor. Activate the switch at Callout 3 to light the nearby torch. The cobweb blocking the door will burn away, allowing you to walk through. The switch will also light the torch on the 2nd Floor.



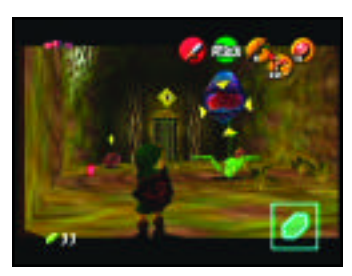
**4 FIND THE FAIRY SLINGSHOT**

Light a Deku Stick and take the flame to the torch in the middle. A small treasure chest will drop on the opposite side of room. Eliminate as many Baby Gohmas as you can. Check the ceiling for Baby Gohma Egg locations and walk close to the eggs on the ledges to make them hatch, then lure them down so you can fight them. Activate the switch to raise the platforms. Defeat the last Baby Gohma on the side ledge to reveal a large treasure chest at Callout 4. Inside is the Fairy Slingshot. The door will also unlock. Collect the small treasure chest on the far ledge and leave the room.



**5 PUT THE FAIRY SLINGSHOT TO USE**

Return to the 2nd Floor and use a lighted Deku Stick to remove the cobwebs at Callout 5. In the next room, you will battle a Giant Deku Babu. Target it and use your new Fairy Slingshot to defeat it without having to get too close. Shoot the eye switch with the Fairy Slingshot to unlock the next door.



**6 COLLECT THE COMPASS**

After dealing with the Baby Gohmas, shoot the Skulltulas off the vine-covered walls with your Fairy Slingshot. Climb up to the ledge and collect the Compass from the large treasure chest. Hit the belly of the Skulltula a couple times to defeat it, then shoot the ladder across the room with your Fairy Slingshot. It will lower, allowing you to leave the room.



**7 JUMP THROUGH THE 1ST FLOOR**

Climb back up to the 3rd floor and jump off the edge. Aim for the center of the cobweb in the middle of the 1st Floor. You will break through to Basement 1.



**8 PUSH THE BUTTONS**

You can only access half of this room.. Activate the switch at Callout 8 to set the torch on fire. Use a lighted Deku Stick to burn the cobwebs to the left of torch. Activate the button to drop a small treasure chest near the first button you pushed. Hit the eye switch with your Fairy Slingshot to unlock the door below it.



**9 DEAL WITH THE DEKU SCRUB**

Defeat all of the enemies in room to unlock the door you came in. With L-Targeting, use your Deku Shield to deflect the Deku Nuts that the Deku Scrub shoots at you. This will send the Deku Scrub running for a short time, allowing you to concentrate on the Baby Gohmas. To unlock the next door, light a Deku Stick at the torch in the previous room, then bring it back and light the two torches next to the door.



**10 TRANSFER FIRE**

First collect the small treasure chest to the left. Next, press the switch to start the timed torch. Time it so that you can light the torch, then jump onto the moving platform. Make sure to duck underneath the spikes and watch out for the Baby Gohma that appears. Light the torches on other side to unlock the next door. Climb behind the Skulltula. The other treasure chest in this room cannot be collected until you have learned the Song of Time. This will remove the blue Time Block hiding the treasure chest.



**11 TRICKY TARGETING**

Defeat all of the enemies in the room to unlock the next door. There are a lot of Baby Gohmas on the floor and connected to the ceiling, so be careful. Target the Baby Gohma Eggs on the ground, then deflect the Deku Nuts shot by the Deku Scrub toward the baby Gohma Eggs to eliminate them. L-Target the Baby Gohma Eggs on the ceiling with your Fairy Slingshot. If any of them hatch, use your Deku Nuts to stun them before you attack. There is one Keese that hovers near the ceiling that you will need to eliminate to unlock the door.



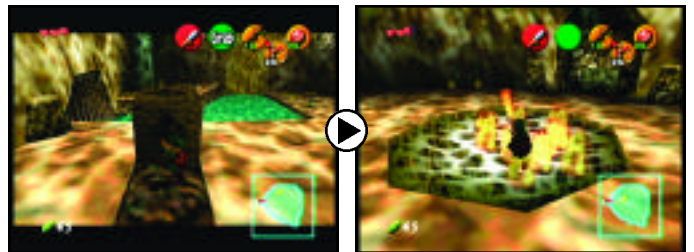
**12 LIGHT A DEKU STICK**

The timed switch in the middle of the room lights the four torches. They only burn long enough to set a Deku Stick on fire. Eliminate the Keese on top of torches from a distance with your Fairy Slingshot, or they will turn into Fire Keese when you hit switch. Fire Keese can burn up your Deku Shield. Burn the cobwebs at Callout 12 and crawl through the hole.



**13 BURN THE COBWEB OVER THE HOLE**

First, deflect a Deku Nut back at the Deku Scrub. It will offer you a Deku Shield for 50 Rupees if you happen to have lost yours on the way. Next, get rid of the Giant Deku Babu, then push the block over the edge. Light a Deku Stick at the lighted torch and quickly climb back up using the block. Be sure to stay in the shallow water, or your Deku Stick will extinguish. Swing the burning Deku Stick at the web before it burns out to fall to Basement 1.



**14 DEKU SCRUB COMBINATION**

You need to deflect Deku Nuts at the Deku Scrubs in the correct order, which is: right, left, then center. Talk to the fleeing Deku Scrub to get hints about fighting Queen Gohma, which will unlock the door leading to her.



**BOSS** **QUEEN GOHMA**

The easiest way to defeat Queen Gohma is to use Deku Nuts to stun her, then attack her eye with your sword. When she retreats to the ceiling, quickly eliminate the dropping Baby Gohmas she produces. Repeat the process until she's defeated. If you run out of Deku Nuts, use your Fairy Slingshot to stun Queen Gohma. Wait for her eye to turn red, then fire.



BROUGHT TO YOU BY:



FOR SUBSCRIPTION INFORMATION, VISIT:  
[http://www.nintendo.com/news/news\\_power\\_promo.jsp](http://www.nintendo.com/news/news_power_promo.jsp)